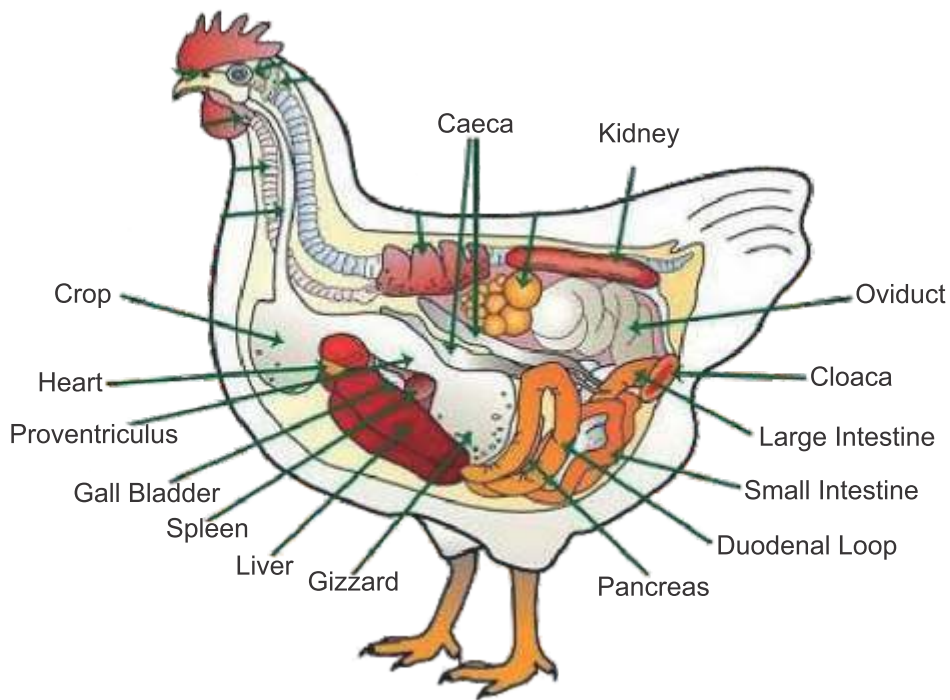




Numida
Bio Care

POULTRY IS POWERFUL

PROMIDA FS



pH Values :

Proventriculus 2.5 to 3.5

Crop 5.5

Gizzard 2.5 to 3.5

Duodenum 5-6

Jejunum 6.5-7

Cloaca 8

Ileum 7

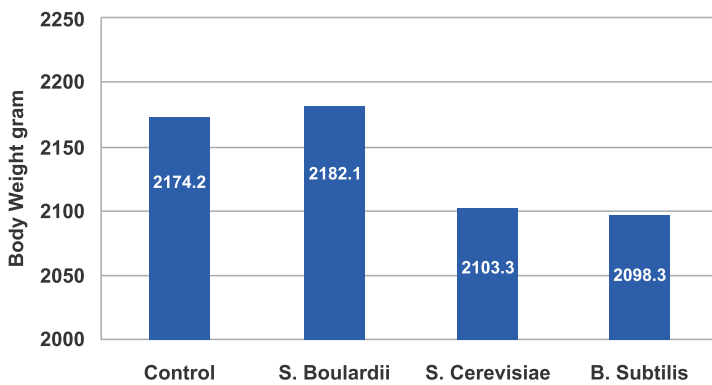


Numida
Bio Care

POULTRY IS POWERFUL

PROMIDA FS

Figure 1. Final body weight at 36 days of age

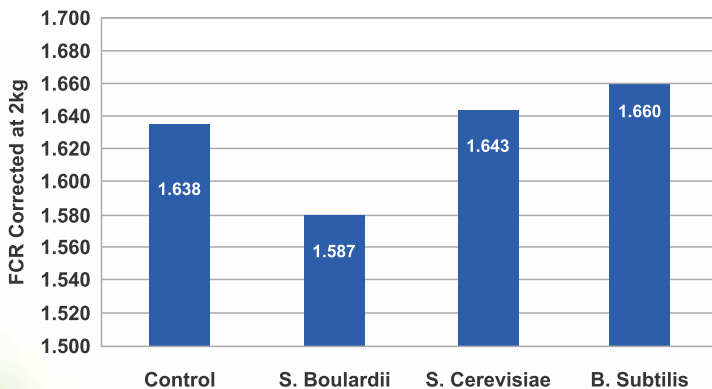


TRIAL CONDUCTED
IN KOLKATA FARM

Overall benefits in all poultry :

Reduces leaky gut, IBS and Improves overall performance and livability

Figure 4. FCR Corrected for 2kg body weight at 36 days



Benefits :

Broilers :

- Promida-FS Reduces first week mortality
- Promida-FS Controls overall mortality.
- Promida-FS Improved feed conversion ratio
- Promida-FS Improved weight gain
- Promida-FS A.G.P can also be replaced/ reduced without effecting the performance.



Numida
Bio Care

POULTRY IS POWERFUL

PROMIDA FS



Features :

Promida-FS is a strain of fungi-yeast , which works as best probiotic in monogastric animals like **poultry and humans**. Promida-FS also has anti inflammatory properties helping in reduction of instances of inflammatory bowel disease.

Promida-FS helps in preventing the villi from getting damaged due to any micobial organism as saccheromyces boulardii prevents the microbes from attaching to the villi and eliminates through competitive exclusion.



Numida
Bio Care

POULTRY IS POWERFUL

PROMIDA FS

Composition :

Fortified Saccheromyces Boulardi , more than 2 billion c.f.u./gram in american type culture collection

Benefits :

Breeders :

- Promida-FS Helps in improving brown egg numbers
- Promida-FS Increases productivity and egg numbers
- Promida-FS Increases hatchability
- Promida-FS Controls loose dropping in peak laying
- Promida-FS Acidifiers can be reduced/replaced.

Layers :

- Promida-FS Maintains peak
- Promida-FS Increases peak
- Promida-FS Lower chances of diarrhoea
- Promida-FS Improved shell quality
- Promida-FS Less egg breakage in post peak laying
- Promida-FS Controls loose dropping in peak laying
- Promida-FS Acidifiers can be reduced/replaced.

Presentation :

05KgX05Kg (In 25Kg)

Inclusion Rate :

- Breeders :** 500 gm/ton of feed
Layers : 250-500 gm/ton of feed
Broilers : Pre Starter and starter : 500 gm/ton of feed
Finisher : 250 gm/ton of feed



Note :

In rainy season and monsoon please
double the dose as precaution
or
as suggested by a veterinarian

Marketed in India by :

NUMIDA BIOCARE PVT. LTD.

21, Ground Floor, Shreeji Complex,
Near Ellis Bridge P.O. , Ellis Bridge,
Ahmedabad-380006.

Email : contact@numida.in

Web : www.numida.in